

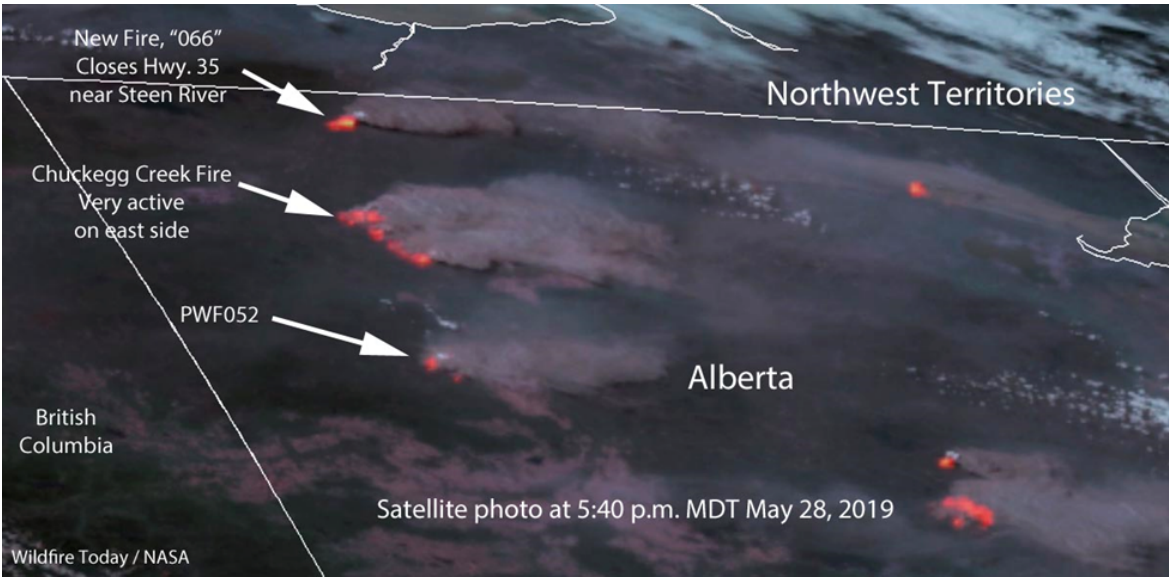
Chuckegg Creek (AKA High Level) Fire, High Level, AB, Started May 12 2019

Contributing Weather

compiled by Miles Epstein, 23 Apr 2023

- Started due to lightning strike
- Fire was classified as “being held” before strong SE winds brought it out of control on May 17th (<https://srd.web.alberta.ca/high-level-area-update/high-level-forest-area-wildfire-update-0-0-0-0-0-0-0-0-0>)
- Warm and dry weather through the end of May allowed the fire to continue to grow
- Fire was SW of high level, so officials were glad winds were forecast out of the east (<https://www.cbc.ca/news/canada/edmonton/slave-lake-wildfire-evacuation-high-level-1.5143124>), and the town was not burned.

Media Images and Video

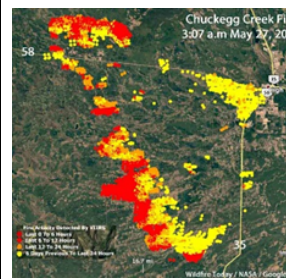
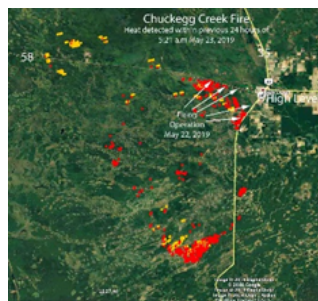
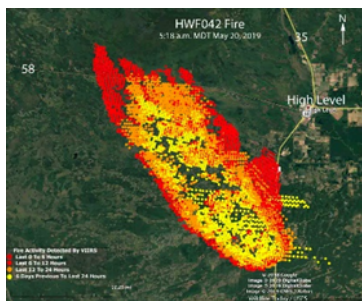
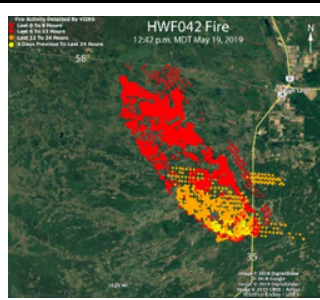
Image/Video	Caption and Source
 <p>New Fire, "066" Closes Hwy. 35 near Steen River</p> <p>Chuckegg Creek Fire Very active on east side</p> <p>PWF052</p> <p>Northwest Territories</p> <p>Alberta</p> <p>British Columbia</p> <p>Satellite photo at 5:40 p.m. MDT May 28, 2019</p> <p>Wildfire Today / NASA</p>	<p><i>Satellite photo showing the location of wildfires in Northern Alberta May 28, 2019.</i></p> <p>https://wildfiretoday.com/tag/chuckegg-creek-fire/</p>



The Chuckegg Creek Fire, looking west along highway 58, west of High Level, Alberta on Saturday evening, May 25, 2019. (photograph by Chris Schwarz/Government of Alberta).
<https://wildfiretoday.com/tag/chuckegg-creek-fire/>



An aerial view of the firing operation on the Chuckegg Creek Fire southwest of High Level, Alberta.
<https://wildfiretoday.com/tag/chuckegg-creek-fire/>



Map of the wildfire southwest of High Level, Alberta at 12:14 p.m. CDT May 19, 2019.

Map of the Chuckegg Creek HWF042 wildfire southwest of High Level, Alberta at 5:18 a.m. CDT May 20, 2019.

Map by Wildfire Today showing heat that was detected in the 24 hours previous to 5:21 a.m. MDT May 23, 2019. The arrows indicate where firefighters conducted a burnout or firing operation along Highways 58 and 35 to help protect the town of High Level, Alberta.

Map showing heat detected by a satellite on the Chuckegg Creek Fire near High Level, Alberta during the seven days prior to May 27, 2019.

Series of satellite images from <https://wildfiretoday.com/tag/chuckegg-creek-fire/>:



July 2, 60% contained

This map shows the perimeter of the Chuckegg Creek wildfire burning in northern Alberta. (Alberta Wildfire)
<https://www.cbc.ca/news/canada/edmonton/chuckegg-creek-wildfire-alberta-contained-1.5197356>



Chuckegg Creek Wildfire. Photo: Town of High Level

<https://www.cjwe.ca/news/news/chuckegg-creek-wildfire-update/>



<https://www.cjwe.ca/news/news/northern-alberta-wildfire-update-may-23-1200-pm/>



An estimated 800 firefighters and support staff continue to fight the Chuckegg wildfire, a 350,000-hectare blaze in northern Alberta. (Courtesy: Alberta Wildfire)
<https://edmonton.ctvnews.ca/chuckegg-wildfire-being-held-for-first-time-since-may-1.4524111>



On Friday, Aug. 23, 2019, Alberta Wildfire announced the Chuckegg Creek wildfire was finally under control. Courtesy, Alberta Wildfire <https://globalnews.ca/news/5806201/alberta-wildfire-chuckegg-creek-under-control/>



The Chuckegg Creek wildfire in the High Level area has officially been extinguished (Photo: Alberta Wildfire) <https://everythinggp.com/2020/10/22/chuckegg-creek-wildfire-extinguished-17-months-after-igniting/>



Source: ESA Sentinel false color image from June 10

TIM MEKO/THE WASHINGTON POST

https://www.washingtonpost.com/world/the-americas/canadas-wildfire-season-is-off-to-a-ferocious-start/2019/06/10/9d2d67bc-88a2-11e9-9d73-e2ba6bbf1b9b_story.html



Firefighters work on the south end of the Chuckegg Creek fire near Paddle Prairie on June 1, 2019.
 Courtesy: Alberta Wildfire
<https://globalnews.ca/news/5344125/high-level-evacuation-order-lifted-alberta-wildfires/>



<https://highlevel.ca/370/Together-We-Stand>



Firefighters monitor the Chuckegg Creek fire southwest of High Level earlier this week. Four from Black Diamond and Turner Valley spent a week assisting with the blaze, returning home yesterday.

<https://www.okotokstoday.ca/local-news/firefighters-home-from-high-level-1537547>

<p>https://www.youtube.com/watch?v=aHiw9aJPnO8 https://www.youtube.com/watch?v=JOBkG7Hnnko</p>	<p>Aerial footage</p>
<p>https://www.cbc.ca/player/play/1721091651838 (good short clip of flames close up)</p>	<p>Footage from ground</p>
	<p>Destruction of homes and property in Paddle Prairie Métis Settlement (near High Level) (also has photos):</p> <p><i>The Chuckegg Creek fire, which covers about 270,000 hectares, remains out of control. Photo: Tamara Pimentel/APTN)</i></p>
<p>https://www.aptnnews.ca/national-news/its-our-home-and-we-aint-going-nowhere-paddle-prairie-residents-say/</p>	<p>News video of destruction in Paddle Prairie</p>